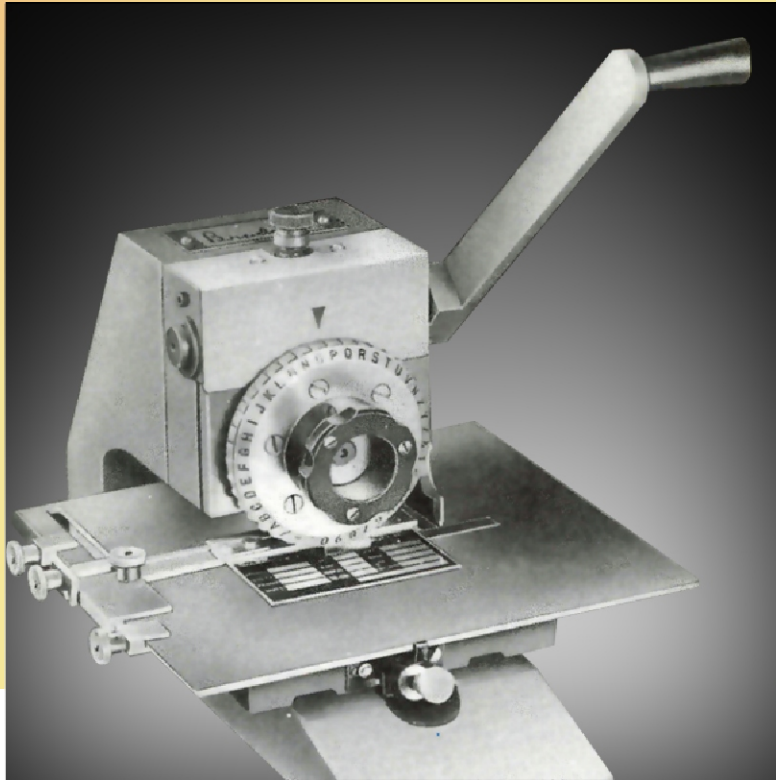


Because
high quality products
must have
high quality markings...!



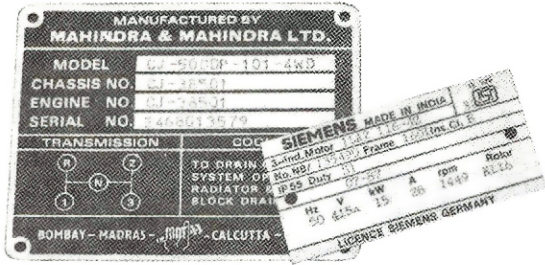
BRADMA DIEHARD METAL LABEL MARKER (MODEL LM40)

Bradma

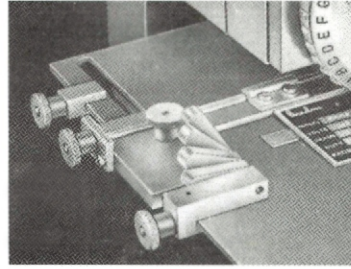
- **MARKS WIDE RANGE OF LABELS/TAGS**
Perfectly marks aluminum, brass, steel... Almost every metal (Especially effective in marking into windows of pre-printed labels !)
- **SHARP CLARITY SAYS ' HIGH QUALITY '**
All marked data is sharply clear and easy-to-read; accurately aligned, evenly spaced, uniformly deep.
- **PRECISION ENGINEERING** has a rugged cast iron frame, specially hardened ground steel components and unique dial wheel construction with interchangeable type inserts. Every feature is designed and engineered for trouble-free service.
- **EVEN MORE VERSATILITY** Ideal when a wide range of label sizes need marking; when marking data varies; and when short production runs are required.
- **LOW COST TOO** Remember, this Bradma Diehard Metal Label Marker is a HIGH PRECISION TOOL. Which means virtually no label spoilage, virtually no rejections. Result : Marking cost is considerably lower than that by tedious unreliable hand-stamping methods.

BRADMA DIEHARD METAL LABEL MARKER (Model LM40)

ENGINEERED FOR LONG LIFE AND LASTING PRECISION !



SPECIAL FACILITIES

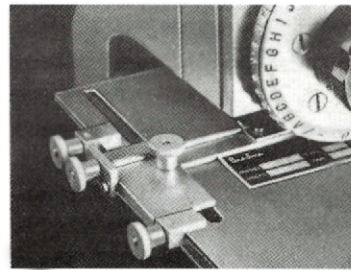


- **Leaf-gauge for multi-line labels** This special leaf gauge can be **custom-built** to your individual need. It enables speedy alignment of each line before marking !... After marking a line, a leaf is flipped for immediate setting to mark in the next line !

So easy to operate ! Takes just a **few minutes** on the machine to know how to operate it !

BASIC 5-STEP OPERATION

1. Simply set for marking depth.
2. Locate label on machine table.
3. Rotate dial wheel to select the character to be marked.
4. Depress operating handle to mark label.
5. Release operating handle - and the table **automatically** advances the label to the next marking position.



- **Stops for 2-lines labels** Specially for 2=line marking there are **two stops** (supplied with machine) to enable faster, accurate automatic alignment of each line before marking.

SPECIFICATIONS

LABEL CAPACITY	Upto 100 mm deep and 200mm wide
LABEL THICKNESS	0.3mm to 2.5mm
MARKING LIMITS	10mm minimum and 95mm maximum from top edge of label
TABLE SIZE	240 x 90mm
TABLE TRAVEL	125mm from right to left
CHARACTERS ON DIAL WHEEL	A thru' Z . - / &
NETT WEIGHT	15 kg

CODE	CHAR. SIZE	ACTUAL STYLE
LM40/1.6	1.6mm	234ABC
LM40/2	2mm	234ABC
LM40/3	3mmq	234ABC

EACH CHARACTER OCCUPIES A SPACE AS WIDE AS IT IS HIGH
Example : 10 CHARACTERS 3mm HIGH, OCCUPY A SPACE 30mm LONG.

Bradma


FORBES GROUP
A TATA ENTERPRISE