

Because
high quality products
must have
high quality markings...!



BRADMA DIEHARD INTERCHANGEABLE STEEL TYPES

Bradma

- Perfect for part-numbering and specification-marking on steel, aluminium, brass, etc.
- High tool life.
- Types made from high quality tool steel; treated to remove scale and resist rust.
- Hardened and tempered for high resistance, retaining toughness at the same time.
- All dimensions to vary close tolerances, for the clearest uniform impression when several types are assembled together.
- Composite stamping by assembling types in holders for hand or machine stamping.

BRADMA DIEHARD

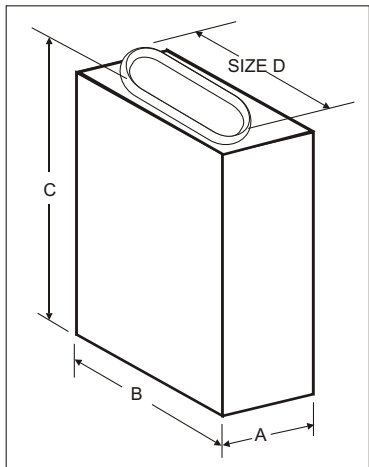
INTERCHANGEABLE STEEL TYPES

STANDARD FOUNT SETS

- Type sizes range from 1 mm to 10 mm.
- Types comprise alphas, numerals and punctuation marks - chosen to cover most needs and minimize duplication.
- Fount sets for smaller type sizes consist of 100

types; and for bigger type sizes consist of 60 types. (See table below)

- Bevel angles, character depth & calligraphy to maximize type life.
- Sets are available with or without 'hand holder', as desired, in a compact box with tweezers for smaller type sizes.



TYPE CODE NO.	CHARACTER SIZE D MM	TYPE SIZE			FOUNT SET CODE NO.		NUMBER OF TYPES IN SET	NUMBER OF SPACERS IN SET	HAND HOLDER CODE NUMBER	HAND HOLDER CAPACITY
		A MM	B MM	C MM	WITH HAND HOLDER	WITHOUT HAND HOLDER				
T 010	1.00	1.00	8.00	25.00	112 BH 010	112B 010	100	12	8 H 20	20
T 062	1.59 (1 / 16")	1.59	3.18	15.88	112 BH 062	112B 062	100	12	125 H 750	12
T 020	2.00	2.00	8.00	25.00	112 BH 020	112B 020	100	12	8 H 25	12
T 093	2.40 (3 / 32")	2.40	6.35	19.05	112 BH 093	112B 093	100	12	250H 1000	10
T 030	3.00	3.00	8.00	25.00	112 BH 030	112B 030	100	12	8H 25	8
T 125	3.18 (1/ 8")	3.18	6.35	19.05	112 BH 125	112B 125	100	12	250H 1250	10
T 040	4.00	4.00	8.00	25.00	112 BH 040	112B 040	100	12	8 H40	10
T 187	4.76 (3 / 16")	4.76	7.94	19.05	112 BH 187	112B 187	100	12	312 H 1250	6
T 050	5.00	5.00	8.00	25.00	112 BH 050	112B 050	100	12	8 H 40	8
T 060	6.00	6.00	8.00	25.00	112 BH 060	112B 060	100	12	8 H 40	6
T 250	6.35 (1 / 4")	6.35	9.53	19.05	112 BH 250	112B 250	100	12	375 H 1500	6
T 080	8.00	8.00	14.00	25.00	66 BH 080	66B 080	60	6	14 H 60	7
T 375	9.53 (3 / 8")	9.53	15.88	25.40	66 BH 375	66B 375	60	6	625 H 2250	6
T 100	10.00	10.00	14.00	25.00	66 BH 100	66B 100	60	6	14 H 60	6

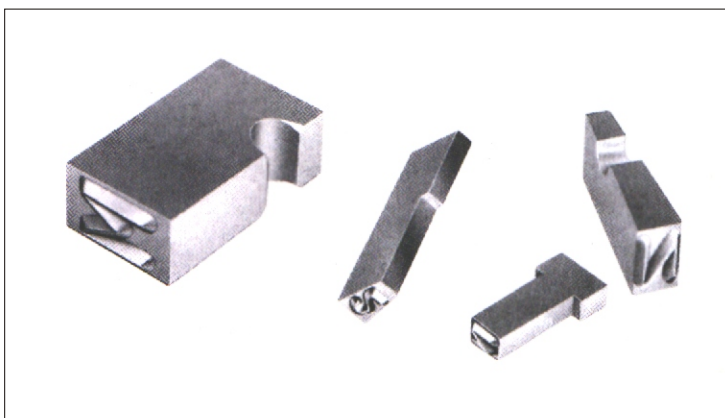
A	A	A	B	B	C	C	D	D	E	E	E	E	F	F	G	G	H	H	I
I	I	J	J	K	K	L	L	L	M	M	N	N	N	O	O	O	P	P	Q
R	R	R	S	S	S	T	T	U	U	U	V	W	W	X	X	Y	Z	&	/
/	-	-	1	1	1	1	2	2	2	2	3	3	3	4	4
4	4	5	5	5	6	6	6	7	7	7	8	8	8	9	9	9	0	0	0

Composition of 100 types

A	B	C	D	E	F	G	H	I	J	K	L	M	N	O
P	Q	R	S	T	U	V	W	X	Y	Z	1	1	1	2
2	2	3	3	3	4	4	4	5	5	5	6	6	6	7
7	7	8	8	8	9	9	9	0	0	0	/	-	.	.

Composition of 100 types

SPECIAL TYPES ALSO AVAILABLE

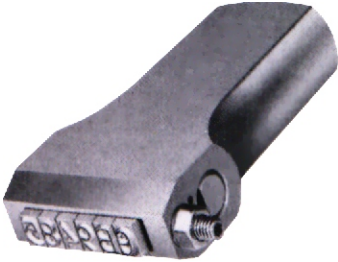


- Segmental, radial, grooved and stepped types for special applications.
- Dotted calligraphy.
- Convex / Concave character faces.
- Special calligraphy.
- Special materials for types to suit the applications.
- Types for red-hot stamping.
- Types for hot-foil stamping.
- Types for different kinds of packaging : Cards board, Collapsible Tube Crimping, Sachets, Tetrapacks.

TYPE HOLDERS

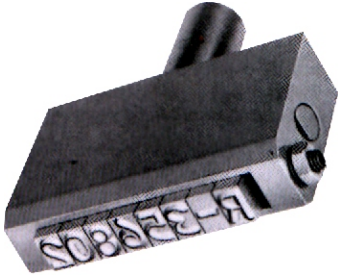
These Bradma - designed holders guarantee accurate type location, positive locking, and are very durable. And they enable very quick change of types!

Hand Holders



HAND HOLDER CODE NUMBER	HOLDER CAPACITY - NUMBER OF TYPES													
	TYPE SIZE MM													
	1.00	1.59 (1/16")	2.00	2.40 (3/32")	3.00	3.18 (1/8")	4.00	4.76 (3/16")	5.00	6.00	6.35 (1/4")	8.00	9.53 (3/8")	10.00
8 H 20	20		10		6	5								
8 H 25			12		8	6		5	4					
8 H 40					13	10		8	6					
14 H 60											7			6
125 H 750		12												
250 H 1000			10			8								
250 H 1250			13			10								
312 H 1250								6						
375 H 1500										6				
625 H 2250													6	
250 H 2L 1000		*24												

Machine Holders

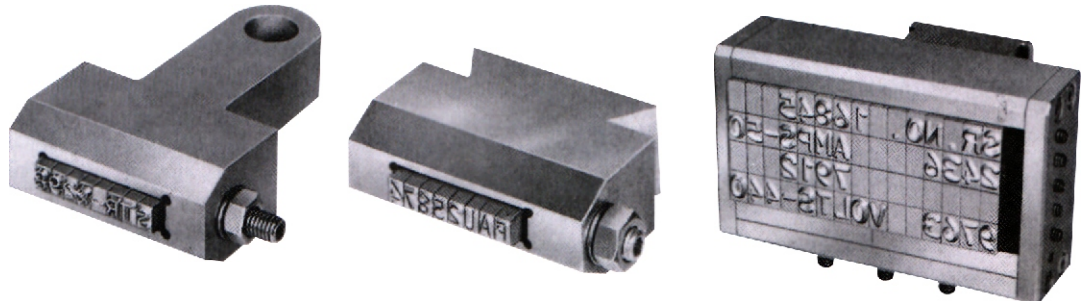


HAND HOLDER CODE NUMBER	HOLDER CAPACITY - NUMBER OF TYPES											
	TYPE SIZE MM											
	1.00	1.59 (1/16")	2.00	2.40 (3/32")	3.00	3.18 (1/8")	4.00	4.76 (3/16")	5.00	6.00	6.35 (1/4")	
8 M 20	20		10		6	5						
8 M 40	40		20		13	10		8	6			
8 M 60			30		20	15		12	10			
8 M 80					26	20		16	13			
125 M 1000		16										
125 M 2000		32										
250 M 1000				10		8						
250 M 2000				21		16						
250 M 3000				32		24						
312 M 2000								10				
312 M 3000								16				
375 M 2000												8
375 M 3000												12
250 M2L 1000		*24										

In Two Lines: STANDARD SHANK SIZE: 25mm DIAMETER X 35mm LONG.

Remember, special holders can be made to suit specific applications!

Special Holders



ACTUAL CHARACTER SIZES & STYLES

MM 10.00	234ABC
9.53 (3/8")	234ABC
8.00	234ABC
6.35 (1/4")	234ABC
6.00	234ABC
5.00	234ABC
4.76 (3/16")	234ABC
4.00	234ABC
3.18 (1/8")	234ABC
3.00	234ABC
2.40 (3/32")	234ABC
2.00	234ABC
1.59 (1/16")	234ABC
1.00	234ABC

Bradma

