

# Bradma®

Automating The Future



## PRICE LIST

EFFECTIVE 01.06.2024



## CONVENTIONAL MARKING SYSTEMS



Forbes & Company Limited



## VISION

To be a solution provider to the customers with the technologies in the field of Marking & traceability solutions, Industrial automation & Industry 4.0

### Explanations:

- **A Solution provider:** Build solutions for Manufacturers (Manufacturer of manufacturers)The
- **Technologies:** Marking ( Mechanical Marking/Dot Peen/Laser Marking) Vision systems/Traceability & Machine interface Software/Work Holding devices/Material movement & Integration of different technologies related to the domain
- **Marking & traceability solutions and Industrial automation:** Automotive & auto components; Machine communication & machine data, Component inspection, Assembly of sub-assemblies and integration of various technologies.

## MISSION

- To build technology led organisation related to marking traceability and automation.
- To add value to the customer's business while adhering to our core value of **QPD:** Quality, Price, Delivery and 5C's: Convenience, Comfort, Care, Commitment and Customer Delight
- To develop a strong design and project management skillset to enhance the quality of solutions.
- To establish the cost-efficient supplier base for industrial automation solutions
- To be accountable towards the interest of all stakeholders, environment & Society at large through all our actions and decisions

## QUALITY POLICY

**We commit** ourselves to provide **customer solutions** by delivering innovative products in the field of **marking traceability & industrial automation** through **continual improvement** by active **participation of our employees**.

We remain **committed toward environment and statutory compliances**.





## ABOUT BRADMA

Forbes And Company Ltd. is group company of the well-known Shapoorji Pallonji Group, leaders in engineering, infrastructure, construction, oil and gas and real estate businesses, amongst many others.

At Bradma we manufacture marking tools, marking machines and offer wide range of solutions in traceability. The company was amalgamated into Forbes Group in the year 2004 and have been a part of Forbes Group since then.

Bradma is one of the pioneers in India, in the business of manufacturing and selling of Marking and Traceability products since 1960s.

Bradma began its journey with conventional marking machines like hand punches, ISTs, Roll marking machines, Label markers, etc.

Keeping up with times and technological advancement, we started manufacturing products like pin marking and laser SPMs for marking and traceability in industrial automation

Our current offerings of the Bradma includes complete traceability solutions, Special Purpose Machine, Industrial Automation with completely integrated solutions for Industry 4.0.



## CMS: Interchangeable Steel Types

### IST - LOOSE (INCH SIZES)

Size	Model	Standard	Model	Spacer	Model	Dotted	Model	Reverse	Wooden Box
1/16"	T062	113	S062	71	T062D	179	T062R	192	1690
3/32"	T093	118	S093	71	T093D	199	T093R	229	1847
1/8"	T125	121	S125	77	T125D	199	T125R	237	1847
3/16"	T187	200	S187	87	T187D	276	T187R	386	2347
1/4"	T250	203	S250	123	T250D	370	T250R	392	2418
3/8"	T375	371	S375	354	T375D	536	T375R	722	2935

### IST - LOOSE (METRIC SIZES)

Size	Model	Standard	Model	Spacer	Model	Dotted	Model	Reverse	Wooden Box
1MM	T010	135	S010	71	T010D	444	T010R	200	1706
2MM	T020	115	S020	71	T020D	444	T020R	172	1706
3MM	T030	120	S030	97	T030D	487	T030R	197	2018
4MM	T040	156	S040	97	T040D	487	T040R	255	2018
5MM	T050	161	S050	97	T050D	641	T050R	262	2018
6MM	T060	164	S060	131	T060D	653	T060R	268	2018
8MM	T080	328	S080	154	T080D	864	T080R	535	1817
10MM	T100	348	S100	164	T100D	936	T100R	570	1817
12MM	T120	471	S120	191	T120D	1030	T120R	778	0
16MM	T160	451	S160	198	T160D	1106	T160R	629	0

### SPECIAL IST LOOSE

Description	List Price ₹
100091 IST SP RD 1.5MM	262
100225 IST SP RD 2MM	256
TC020 IST CRMP 2MM	265
93346 FEM.CRIMP WITH NICK	285
94125 IST SPL.L-SHAPE 1.60MM	311
94525 IST SPL. 8MM T-SHAPED	322
TC020 IST CRMP 2MM	265

### IST DOTTED SET

SAP Code	Description	List Price ₹
FCA0101206	112B030D IST FONT SET WITHOUT HOLDER DOTTED	46874
FCA0103187	112BH040 IST SET WITH HOLDER DOTTED	59001
FCA0103685	112BH093 IST SET WITH HOLDER DOTTED	15300
FCA0109231	112BH030D IST FONT SET WITH HOLDER DOTTE	54863
FCA0105926	56BN125 IST NUMBER SET WITHOUT HOLDER - 1/8"	6729

## CMS: Interchangeable Steel Types

IST SET (METRIC SIZES)		
SAP Code	Description	List Price ₹
FCA0101205	IST FONT SET WITH HOLDER SIZE 1MM	15882
FCA0100911	112BH020 IST SET WITH HOLDER SIZE 2MM	14141
FCA0100912	112BH030 IST SET WITH HOLDER SIZE 3MM	14979
FCA0100913	112BH040 IST SET WITH HOLDER SIZE 4MM	18499
FCA0100914	112BH050 IST SET WITH HOLDER SIZE 5MM	18359
FCA0100915	112BH060 IST SET WITH HOLDER SIZE 6MM	18486
FCA0100916	112B010 IST SET WITHOUT HOLDER SIZE 1MM	14166
FCA0100917	112B020 IST SET WITHOUT HOLDER SIZE 2MM	12261
FCA0100918	112B030 IST SET WITHOUT HOLDER SIZE 3MM	12769
FCA0100919	112B040 IST SET WITHOUT HOLDER SIZE 4MM	16326
FCA0100920	112B050 IST FONT SET WITHOUT HOLDER SIZE 5M	16707
FCA0100921	112B060 IST SET WITHOUT HOLDER SIZE 6MM	17089
FCA0100922	66BH080 IST SET WITH HOLDER SIZE 8MM	25417
FCA0100923	66BH100 IST SET WITH HOLDER SIZE 10MM	27259
FCA0100924	66B080 IST SET WITHOUT HOLDER SIZE 8MM	20303
FCA0100925	66B100 IST SET WITHOUT HOLDER SIZE 10MM	22367

IST SET (INCH SIZES)		
SAP Code	Description	List Price ₹
FCA0100900	112BH062 IST SET WITH HOLDER SIZE 1/16"	13696
FCA0100901	112BH093 IST SET WITH HOLDER SIZE 3/32"	14763
FCA0100902	112BH125 IST SET WITH HOLDER SIZE 1/8"	15081
FCA0100903	112BH187 IST SET WITH HOLDER SIZE 3/16"	23047
FCA0100904	112BH250 IST SET WITH HOLDER SIZE 1/4"	22127
FCA0100905	112B062 IST SET WITHOUT HOLDER SIZE 1/16"	12007
FCA0100906	112B093 IST SET WITHOUT HOLDER SIZE 3/32"	12515
FCA0100907	112B125 IST SET WITHOUT HOLDER SIZE 1/8"	12895
FCA0100908	112B187 IST SET WITHOUT HOLDER SIZE 3/16"	20518
FCA0100909	112B250 IST SET WITHOUT HOLDER SIZE 1/4"	18758

IST NUMBER SET		
SAP Code	Description	List Price ₹
FCA0105922	56BN062 IST NUMBER SET WITHOUT HOLDER -1/16"	6228
FCA0105923	56BN020 IST NUMBER SET WITHOUT HOLDER -2MM	6360
FCA0105924	56BN093 IST NUMBER SET WITHOUT HOLDER -3/32"	6491
FCA0105925	56BN30 IST NUMBER SET WITHOUT HOLDER -3 MM	6643
FCA0105926	56BN125 IST NUMBER SET WITHOUT HOLDER -1/8"	6729



HOLDERS		
Material	Description	List Price ₹
FCH0100012	125H750 HAND HOLDER ASSY. (90348)	5473
FCA0100529	8H40 HAND HOLDER ASSY (90241)	5220
FCH0100006	375H1500 HAND HOLDER ASSY. (2311)	2780
FCH0100106	SPL RMMC HOLDER TO HOLD SM30870	3523
FCH0100107	102071 SPL HOLDER TO HOLD 10CHR OF T060	6431
FCH0100109	102085 2 LINE HOLDER-T030 5 CHR PER LINE	5014
FCH0100108	102117 14M170 HOLDER TO HOLD 17CHR-T100	11702
FCH0100111	102143 2-LINE HOLDER TO HOLD T050 10 IST	23497
FCH0100022	125M2000 MACHINE HOLDER ASSY (1952)	2027
FCA0104734	2258- MACHINE HOLDER ASSY. (250M2L1000)	1377
FCH0100104	625H1500 HAND HOLDER ASSY.	6886
FCH0100086	8H40G HAND HOLDER ASSY FOR GROOVED TYPE	4433
FCH0100075	8R1060 MACHINE HOLDER (R.M.M/C. ) 90321	3178
FCH0100090	90109--125R102000 M/C HOLDER R.M.M/C.	5418
FCH0100091	100620 SPL.M/C HOLDER ASSY.FOR IPP7-8X13	8395
FCH0100004	250H1250 HAND HOLDER ASSY (2309)	2510
FCH0100079	8H15 SPL.HAND HOLDER ASSY. (100329)	2395
FCH0100074	8R1020 MACHINE HOLDER (R.M.M/C. ) 90317	2405
FCH0100080	8R1040 MACHINE HOLDER (R.M.M/C. ) 90319	3523
FCH0100035	90108--- 125R101000 M/C HOLD. (R.M.M/C.)	3772
FCH0100076	90110---- 250R102L1000M/C HO (R.M.M/C. )	3005
FCH0100077	90112---- 250R101000 M/C HOLD R.M.M/C	3185

HOLDERS		
Material	Description	List Price ₹
FCH0100105	SPL RMMC HOLDER FOR 2 LINES/4MM RH15	16065
FCH0100092	100763SPL2 LINE M/C HOLDR RMMC	7551
FCH0100024	14H60 HAND HOLDER ASSY. (90457)	6680
FCH0100017	2258- MACHINE HOLDER ASSY. (250M2L1000)	2042
FCH0100078	90111--- 250R102L2000 M/C HOLD R.M.M/C	3005
FCH0100081	90113---250R102000 M/C HOLD R.M.M/C	4989
FCH0100103	SPL RMMC HOLDER TO HOLD T093 101X25X81	13300
FCH0100031	8H20 HAND HOLDER ASSY. (6270)	2695
FCH0100018	8H25 HAND HOLDER ASSY. (6272)	2783
FCH0100003	250H1000 HAND HOLDER ASSY. (2308)	2820
FCH0100005	312H1250 HAND HOLDER ASSY (2310)	3025
FCH0100014	250M3000 MACHINE HOLDER ASSY. 1956	5533
FCH0100015	312M2000 MACHINE HOLDER ASSY. 1957	4048
FCH0100019	8M80 MACHINE HOLDER ASSY. (90243)	5705
FCH0100013	250M2000 MACHINE HOLDER ASSY. 1955	4232
FCH0100010	8M60 MACHINE HOLDER ASSY. (6257)	5540
FCH0100008	8M40 MACHINE HOLDER ASSY. (6253)	4308
FCH0100016	375M2000 MACHINE HOLDER ASSY. (1959)	4188
FCH0100001	250M1000 MACHINE HOLDER ASSY. (1954)	4232
FCH0100002	125M1000 MACHINE HOLDER ASSY (1961)	4130
FCH0100007	8M20 MACHINE HOLDER ASSY. (6249)	4232



## CMS: Hand Held Punches

HHP DOTTED ALPHA SETS		
Material	Description	List Price ₹
FCB0102713	26HHP020D HHP DOTTED SET A TO Z SIZE 2MM	11435
FCB0100541	26HHP030D HHP DOTTED SET A TO Z SIZE 3MM	19185
FCB0100578	26HHP040D HHP DOTTED SET A TO Z SIZE 4MM	23847
FCB0100615	26HHP050D HHP DOTTED SET A TO Z SIZE 5MM	26177
FCB0100652	26HHP060D HHP DOTTED SET A TO Z SIZE 6MM	23610
FCB0100689	26HHP080D HHP DOTTED SET A TO Z SIZE 8MM	32696
FCB0101587	26HHP100D HHP DOTTED SET A TO Z SIZE 10MM	35859
FCB0102501	26HHP120D HHP DOTTED SET A TO Z SIZE 12MM	38115

DOTTED HHP LOOSE	
Description	List price ₹
HHP030D HAND PUNCH DOTTED SIZE 3MM	730
HHP040D HAND PUNCH DOTTED SIZE 4MM	909
HHP050D HAND PUNCH DOTTED SIZE 5MM	999
HHP060D HAND PUNCH DOTTED SIZE 6MM	1044
HHP080D HAND PUNCH DOTTED SIZE 8MM	1224

HAND HELD PUNCHES LOSE	
Description	List price ₹
HHP 2MM	288
HHP 3MM	296
HHP 4MM	341
HHP 5MM	358
HHP 6MM	385
HHP 8MM	410
HHP 10MM	448
HHP 12MM	897
HHP 16MM	2049
HHP 20MM	3073
HHP 25MM	3183

HHP SPECIALS ALPHA SETS		
Material	Description	List Price ₹
FCB0101255	26HHP250D HHP DOTTED SET A TO Z SIZE 1/4"	14213
FCB0101998	26HHP375D HHP DOTTED SET A TO Z SIZE 3/8"	48279
FCB0102632	26HHP187D HHP DOTTED SET A TO Z SIZE 3/16"	13845
FCB0102646	26HHP500D HHP DOTTED SET A TO Z SIZE 1/2"	38115
FCB0101381	26HHP030R HHP REVERSE SET A TO Z SIZE 3MM	10806
FCB0101453	26HHP187R HHP REVERSE SET A TO Z SIZE 3/16"	13873
FCB0101519	26HHP050R HHP REVERSE SET A TO Z SIZE 5MM	27202
FCB0101713	26HHP080R HHP REVERSE SET A TO Z SIZE 8MM	32652
FCB0102414	26HHP100R HHP REVERSE SET A TO Z SIZE 10MM	35574
FCB0102451	26HHP030R HHP REVERSE SET A TO Z SIZE 3MM	19032
FCB0102628	26HHP250R HHP REVERSE SET A TO Z SIZE 1/4"	23422
FCB0102653	26HHP060R HHP REVERSE SET A TO Z SIZE 6MM	23422
FCB0102720	26HHP020R HHP REVERSE SET A TO Z SIZE 2MM	11435

HHP SPECIAL NUMBER SETS		
Material	Description	List Price ₹
FCB0101256	9HHP250D HHP DOTTED SET 0 TO 8 SIZE 1/4"	10896
FCB0101997	9HHP375D HHP DOTTED SET 0 TO 8 SIZE 3/8"	22283
FCB0102633	9HHP187D HHP DOTTED SET 0 TO 8 SIZE 3/16"	6390
FCB0101373	9HHP500D HHP DOTTED SET 0 TO 8 SIZE 1/2"	17733
FCB0101714	9HHP080R HHP REVERSE SET 0 TO 8 SIZE 8MM	15070
FCB0102378	9HHP050R HHP REVERSE SET 0 TO 8 SIZE 5MM	11986
FCB0102415	9HHP100R HHP REVERSE SET 0 TO 8 SIZE 10MM	16419
FCB0102452	9HHP030R HHP REVERSE SET 0 TO 8 SIZE 3MM	9086
FCB0102488	9HHP020R HHP REVERSE SET 0 TO 8 SIZE 2MM	5276
FCB0102654	9HHP060R HHP REVERSE SET 0 TO 8 SIZE 6MM	10810

HHP NUMBER DOTTED SETS		
Material	Description	List Price ₹
FCB0102714	9HHP020D HHP DOTTED SET 0 TO 8 SIZE 2MM	5276
FCB0100540	9HHP030D HHP DOTTED SET 0 TO 8 SIZE 3MM	6698
FCB0100577	9HHP040D HHP DOTTED SET 0 TO 8 SIZE 4MM	8312
FCB0100614	9HHP050D HHP DOTTED SET 0 TO 8 SIZE 5MM	9118
FCB0100651	9HHP060D HHP DOTTED SET 0 TO 8 SIZE 6MM	9523

## CMS: Hand Held Punches

HHP NUMBER DOTTED SETS		
Material	Description	List Price ₹
FCB0102714	9HHP020D HHP DOTTED SET 0 TO 8 SIZE 2MM	5276
FCB0100540	9HHP030D HHP DOTTED SET 0 TO 8 SIZE 3MM	6698
FCB0100577	9HHP040D HHP DOTTED SET 0 TO 8 SIZE 4MM	8312
FCB0100614	9HHP050D HHP DOTTED SET 0 TO 8 SIZE 5MM	9118
FCB0100651	9HHP060D HHP DOTTED SET 0 TO 8 SIZE 6MM	9523
FCB0100688	9HHP080D HHP DOTTED SET 0 TO 8 SIZE 8MM	11135
FCB0101588	9HHP100D HHP DOTTED SET 0 TO 8 SIZE 10MM	16550
FCB0102502	9HHP120D HHP DOTTED SET 0 TO 8 SIZE 12MM	17630

HHP NUMBER SETS		
Material	Description	List Price ₹
FCB0100376	9HHP050 HHP NUMBER SET 0 TO 8 SIZE 5MM	3235
FCB0100366	9HHP060 HHP NUMBER SET 0 TO 8 SIZE 6MM	3235
FCB0100367	9HHP080 HHP NUMBER SET 0 TO 8 SIZE 8MM	3791
FCB0100368	9HHP100 HHP NUMBER SET 0 TO 8 SIZE 10MM	3791
FCB0100377	9HHP120 HHP NUMBER SET 0 TO 8 SIZE 12MM	7338
FCB0101924	9HHP160 HHP NUMBER SET 0 TO 8 SIZE 16MM	8176
FCB0100501	9HHP200 HHP NUMBER SET 0 TO 8 SIZE 20MM	19210

HHP ALPHA SETS		
Material	Description	List Price ₹
FCB0100369	26HHP062 ALPHA SET A TO Z SIZE 1.6MM	7679
FCB0100370	26HHP020 HHP ALPHA SET A TO Z SIZE 2MM	7679
FCB0100361	26HHP030 HHP ALPHA SET A TO Z SIZE 3MM	7661
FCB0100371	26HHP040 HHP ALPHA SET A TO Z SIZE 4MM	9029
FCB0100372	26HHP050 HHP ALPHA SET A TO Z SIZE 5MM	9029
FCB0100362	26HHP060 HHP ALPHA SET A TO Z SIZE 6MM	9145
FCB0100363	26HHP080 HHP ALPHA SET A TO Z SIZE 8MM	10348
FCB0100364	26HHP100 HHP ALPHA SET A TO Z SIZE 10MM	11225
FCB0100378	26HHP120 HHP ALPHA SET A TO Z SIZE 12MM	20265
FCB0100499	26HHP160 HHP ALPHA SET A TO Z SIZE 16MM	44664
FCB0101720	26HHP200 HHP ALPHA SET A TO Z SIZE 20MM	61777

HHP NUMBER SETS		
Material	Description	List Price ₹
FCB0100373	9HHP062 HHP NUMBER SET 0 TO 8 SIZE 1.6MM	2824
FCB0100374	9HHP020 HHP NUMBER SET 0 TO 8 SIZE 2MM	2804
FCB0100365	9HHP030 HHP NUMBER SET 0 TO 8 SIZE 3MM	2561
FCB0100375	9HHP040 HHP NUMBER SET 0 TO 8 SIZE 4MM	3195

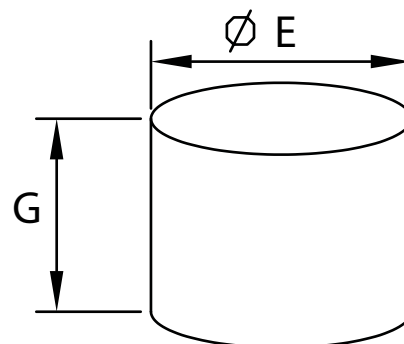




## CMS: Stamp Marks

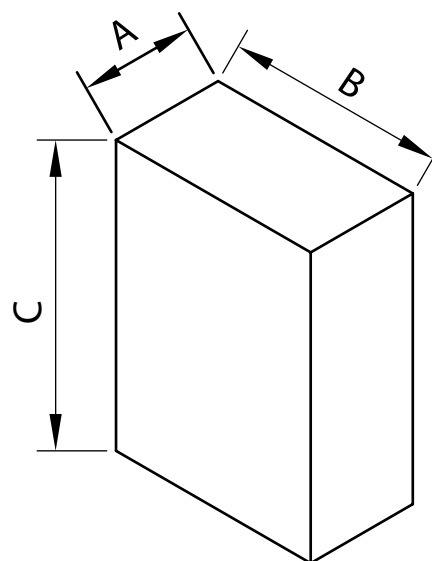
### ROUND SHANK SIZES

SHANK SIZE MM		List Price ₹	
E	G	MARKON 1	MOQ
approx	approx		
10	75	2925	5
12	85	3938	5
16	95	4500	5



### RECTANGULAR SHANK SIZES

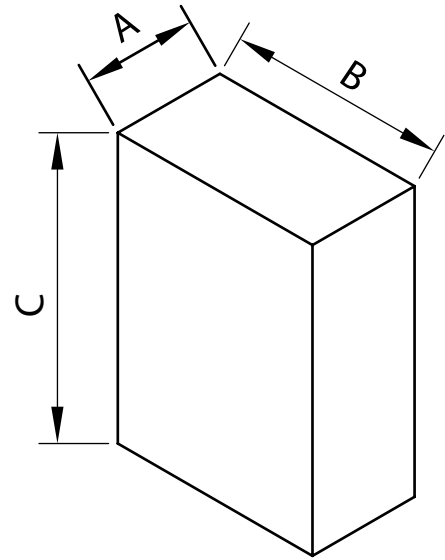
SHANK SIZE MM			List Price ₹	
A	B	C	MARKON 1	MOQ
6.35	9.53	19.05	1875	5
6.35	22.23	19.05	1950	5
8	12	25	2063	5
8	25	25	2475	5
9.53	25.4	19.05	2625	5
6.35	50	19.05	2625	4
8	40	25	2625	4
8	50	25	2625	4
16	25	25	2625	4
16	50	25	3563	3
25	50	25	4500	3



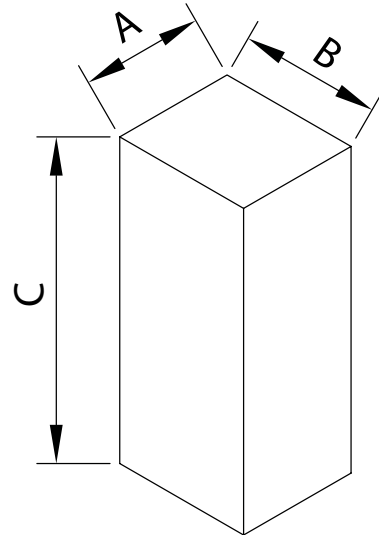
**Note:**

1. Price is for Special and customised Stamp Marks offering by Bradma.
2. Tapped holes on the Stamp Mark will be charged ₹ 900 per stamp.
3. Special or customised Calligraphy will be charged ₹ 1000 per stamp.
4. Order must place as per slandered MOQ. Special cases are open for discussion is subject of discussion.
5. Customer will share .dxf file for customised logo and or branding.

NON-STANDARD SHANK SIZES				
SHANK SIZE MM			List Price ₹	
A	B	C	MARKON 1	MOQ
3.18	3.18	15.88	1875	5
6.35	6.35	15.88	2063	5
6.35	12.7	15.88	2063	5
6.35	17	19.05	2063	5
6.35	20	15.88	2250	5
8	8	25	2063	5
8	16	25	2438	5
8	20	25	2438	5
9.53	15.88	25.4	2625	5
10	14	15	2250	5
6.35	65	19.05	3000	4
8	30	25	3000	4
16	17	25	3000	4



NON-STANDARD SHANK SIZES				
SHANK SIZE MM			List Price ₹	
A	B	C	MARKON 1	MOQ
6.35	75	19.05	3750	3
8	75	25	5625	3
8	100	25	5625	3
12.7	50	19.05	6188	3
12.7	75	19.05	7500	3
16	75	25	7500	3
19.05	50	19.05	7500	3
19.05	75	19.05	7500	3
24	75	25	7500	3
40	50	25	11250	3



**Note:**

1. Price is for Special and customised Stamp Marks offering by Bradma.
2. Tapped holes on the Stamp Mark will be charged ₹ 900 per stamp.
3. Special or customised Calligraphy will be charged ₹ 1000 per stamp.
4. Order must place as per slandered MOQ. Special cases are open for discussion is subject of discussion.
5. Customer will share .dxf file for customised logo and or branding.

## CMS: Numerators

AUTOMATIC ROTARY NUMERATOR		
Material	Description	List Price ₹
FCC0100094	6AN062 AUTO NUMERATOR ASSY 1.6MM 6WHEELS	56961
FCC0100089	6AN020 AUTO NUMERATOR ASSY 2MM 6WHEELS	56930
FCC0100090	6AN030 AUTO NUMERATOR ASSY 3MM 6WHEELS	44998
FCC0100091	6AN040 AUTO NUMERATOR ASSY 4MM 6WHEELS	54745
FCC0100092	6AN050 AUTO NUMERATOR ASSY 5MM 6WHEELS	68115
FCC0100093	6AN060 AUTO NUMERATOR ASSY 6MM 6WHEELS	76072
FCC0100095	6AN080 AUTO NUMERATOR ASSY 8MM 6WHEELS	97624
FCC0100100	7AN062 AUTO NUMERATOR ASSY 1.6MM 7WHEELS	45391
FCC0100096	7AN020 AUTO NUMERATOR ASSY 2MM 7WHEELS	62685
FCC0100097	7AN030 AUTO NUMERATOR ASSY 3MM 7WHEELS	50768
FCC0100098	7AN040 AUTO NUMERATOR ASSY 4MM 7WHEELS	70856
FCC0100099	7AN050 AUTO NUMERATOR ASSY 5MM 7WHEELS	78279
FCC0100101	7AN100 AUTO NUMERATOR ASSY 10MM 7WHEELS	129583
FCC0100102	8AN020 AUTO NUMERATOR ASSY 2MM 8WHEELS	65895
FCC0100103	8AN030 AUTO NUMERATOR ASSY 3MM 8WHEELS	59388
FCC0100104	8AN040 AUTO NUMERATOR ASSY 4MM 8WHEELS	76737
FCC0100105	8AN050 AUTO NUMERATOR ASSY 5MM 8WHEELS	88814
FCC0100431	8AN060 AUTO NUMERATOR ASSY 6MM 8WHEELS	99259
FCC0100145	9AN020 AUTO NUMERATOR ASSY 2MM 9WHEELS	59459
FCC0100150	9AN030 AUTO NUMERATOR ASSY 3MM 9WHEELS	62662
FCC0100430	9AN040 AUTO NUMERATOR ASSY 4MM 9WHEELS	80898
FCC0100153	9AN050 AUTO NUMERATOR ASSY 5MM 9WHEELS	95892

AUTOMATIC ROTARY NUMERATOR		
Material	Description	List Price ₹
FCC0100512	10AN062 AUTO NUMERATOR ASSY 1/16"10WHL.	90038
FCC0100425	10AN020 AUTO NUMERATOR ASSY 2MM 10WHEELS	66040
FCC0100087	10AN030 AUTO NUMERATOR ASSY 3MM 10WHEELS	69031
FCC0100088	10AN040 AUTO NUMERATOR ASSY 4MM 10WHEELS	114642
FCC0100424	10AN050 AUTO NUMERATOR ASSY 5MM 10 WHLS.	106795
FCC0100427	11AN030 AUTO NUMERATOR ASSY 3MM 11WHEELS	77637

ARN WHEELS		
Material	Description	List Price ₹
FCC0100058	96080 ALPHA WHEEL 3MM K TO T ARN	6410
FCC0100061	96616 TENS WHEEL 4MM 0-9 ARN	7480
FCC0100121	96076 ALPHA WHEEL 2MM K TO T	5958
FCC0100122	96075 ALPHA WHEEL 2MM A TO J	5971
FCC0100123	96826 TENS WHEEL 6MM 0 TO 9	11069
FCC0100125	96054 DIGIT WHEEL 1.6MM 0 TO 9	5423
FCC0100126	96055 TENS WHEEL 1.6MM 0 TO 9	5423
FCC0100127	96825 DIGIT WHEEL 6MM 0 TO 9	11069
FCC0100131	96709 TENS WHEEL 5MM 0 TO 9	10102
FCC0100135	96615 DIGIT WHEEL 4MM 0 TO 9	7480
FCC0100136	96649 ALPHA WHEEL 4MM A TO J	7480
FCC0100137	ALPHA WHEEL 4MM K TO T	7480
FCC0100138	96035 TENS WHEEL 2MM 0 TO 9	5958
FCC0100139	96072 ALPHA WHEEL 1.6MM K TO T	5448

ARN WHEELS		
Material	Description	List Price ₹
FCC0100140	96071 ALPHA WHEEL 1.6MM A TO J	5448
FCC0100141	96077 ALPHA WHEEL 2MM U TO Z	5971
FCC0100142	96079 ALPHA WHEEL 3MM A TO J	6372
FCC0100143	96005 TENS WHEEL 3MM 0 TO 9	6372
FCC0100144	96034 DIGIT WHEEL 2 MM 0-9	5958
FCC0100146	96073 ALPHA WHEEL 1.6MM U TO Z	5448
FCC0100148	96790 ALPHA WHEEL 5MM K TO T	11133
FCC0100149	96789 ALPHA WHEEL 5MM A TO J	10102
FCC0100155	96919 DIGIT WHEEL 8MM 0 TO 9	14857
FCC0100157	96920 TENS WHEEL 8MM 0 TO 9	14857
FCC0100160	96004 DIGIT WHEEL 3MM 0 TO 9	6372
FCC0100349	96651 ALPHA WHEEL 4MM U TO Z	7480
FCC0100352	96081 ALPHA WHEEL 3MM U TO Z	6372
FCC0100354	100132 ALPHA WHEEL 6MM A TO J	9847
FCC0100422	96708 DIGIT WHEEL 5MM 0 TO 9	10102
FCC0100432	96825 DIGIT WHEEL 6MM 0 TO 9	11047

NUMERATOR SPARES		
Material	Description	List Price ₹
FCC0100009	90140 INDEXING PIN (2 MM) RTN	1011
FCC0100011	90617 INDEXING PIN (4MM) RTN	1948
FCC0100019	90144 INDEXING PIN (3 MM) RTN	1895
FCC0100029	96058 ACTUATING PAWL (1.6 MM) ARN	8934
FCC0100030	96038 ACTUATING PAWL (2 MM) ARN	8078

NUMERATOR SPARES		
Material	Description	List Price ₹
FCC0100031	96011 ACTUATING PAWL (3 MM) ARN	8061
FCC0100032	ACTUATING LEVER (6 MM) ARN	7087
FCC0100034	96636 ACTUATING PAWL (4/5 MM) ARN	8312
FCC0100037	96637 SPRING FOR ACT. PAWL (4,5,6 MM)ARN	204
FCC0100038	96018 PIN FOR ACTUATING PAWL( 3 MM) ARN	204
FCC0100040	96087 PIN FOR ACTUATING PAWL( 3 MM) ARN	204
FCC0100043	96828 ACTUATING PAWL (6 MM) ARN	11263
FCC0100048	96010 SPRING FOR LEVER LH (1.6,2MM)ARN	186
FCC0100049	TENS HOLDING CATCH (1.6 MM) ARN	1576
FCC0100050	96646 TENS HOLDING CATCH (4/5/6 MM) ARN	1864
FCC0100051	96638 DIGIT HOLDING CATCH (4/5/6 MM) ARN	1853
FCC0100053	96008 HANDLE (3 MM) ARN	319
FCC0100054	96634 SPRING FOR LEVER RH (4,5MM) ARN	204
FCC0100055	96635 SPRING FOR LEVER LH (4,5MM) ARN	204
FCC0100056	96019 SPRING PIN (1.6,2 MM) ARN	109
FCC0100057	96014 TENS HOLDING CATCH (3 MM ) ARN	1576
FCC0100060	96040 TENS HOLDING CATCH (2 MM ) ARN	1576
FCC0100064	96867 SPRING BAR ASSY. 3 MM ARN	4401
FCC0100065	96093 SPRING FOR LEVER RH (3 MM) ARN	206
FCC0100066	96094 SPRING FOR LEVER LH (3 MM) ARN	206
FCC0100068	96039 DIGIT HOLDING CATCH (2 M M) ARN	1097
FCC0100069	96016 SPRING WIRE LONG (1.83X6 9) ARN	134
FCC0100070	96017 SPRING WIRE SHORT (1.51X 39.5) ARN	134
FCC0100071	96020 STOP PIN (1.6,2 MM) ARN	109

## CMS: Numerators

NUMERATOR SPARES		
Material	Description	List Price ₹
FCC0100072	96006 MAKE UP WASHER (1.6/2/3) ARN	173
FCC0100073	96013 DIGIT HOLDING CATCH (3 M M) ARN	1576
FCC0100074	96024 KNIFE ASSY. (FOR ALL ARN )	294
FCC0100075	96909 SPRING FOR LEVER RH (8,1 0 MM) ARN	204
FCC0100076	96910 SPRING FOR LEVER LH (8,1 0 MM) ARN	204
FCC0100077	CENTRE SHAFT 2MM ARN 96033	1100
FCC0100078	CENTRE SHAFT 3MM ARN 96003	1204
FCC0100081	96640 SPRING WIRE LONG (2.03X7 3.5) ARN	121
FCC0100084	96641 SPRING WIRE SHORT (1.60X 3.3) ARN	84
FCC0100086	96092 SPRING PIN (3MM) ARN	204
FCC0100106	96085 ACTUATING LEVER (3 MM) ARN	3936
FCC0100107	96085 ACTUATING LEVER (3 MM) ARN	3895
FCC0100109	96012 SPRING FOR ACT. PAWL (1.6,2,3 MM)	204
FCC0100110	95268 ACTUATING ROD ASSY.	4247
FCC0100112	95269 ACTUATING ROD	101
FCC0100114	ACTUATING PAWL (8 MM) AR N	17234
FCC0100117	95155 PAWL SPRING	84
FCC0100118	98038 COLLET	968
FCC0100119	ACTUATING PAWL 96058	8846
FCC0100120	DIGIT HOLDING CATCH 96059	1566
FCC0100124	98031 RETURN SPRING	541
FCC0100129	95125 PAWL HOLDER	2544
FCC0100133	95156 PAWL HOLDER SPRING	235
FCC0100134	95155 PAWL SPRING	84

NUMERATOR SPARES		
Material	Description	List Price ₹
FCC0100158	96866 SPRING BAR ASSY 3MM 6 WHEEL	2012
FCC0100175	MAIN SPINDLE (2/3 MM RTN )	812
FCC0100181	RTN BODY HAND 2/3MM	7002
FCC0100186	RETAINING SCREW (M6) RTN	304
FCC0100188	96918 TENS HOLDER CATCH 8MM	2553
FCC0100190	96643 SPRING PIN (4,5,6,8,10MM )	229
FCC0100192	96916 SPRING WIRE SHORT (2.61 X 1.04)	268
FCC0100195	96915 SPRING WIRE LONG (2.61 X 1.04 )	268
FCC0100313	7661 PAWL HOLDER ASSY.	3056
FCC0100351	96088 CENTRE SHAFT 3MM 9 WHEELS	943
FCC0100353	97161 SPACER WHEEL 3MM	481
FCC0100391	96038 ACTUATING PAWL (2 MM) ARN	4904
FCC0100393	96062 PIN FOR ACTUATING PAWL(1.6 MM)ARN	204
FCC0100396	96042 PIN FOR ACTUATING PAWL ( 2 MM) ARN	204
FCC0100399	6020 STEEL BALL 1/8	112
FCC0100414	96059 DIGIT HOLDING CATCH 1.6MM	1566
FCC0100415	97021 SPRING FOR LEVER RH (6 MM ) ARN	204
FCC0100416	97022 SPRING FOR LEVER LH (6 MM) ARN	204
FCC0100417	96631 MAKE UP WASHER 4, 5, 6 MM ARN	924
FCC0100419	CENTRE SHAFT 5MM ARN 96723	943
FCC0100438	96015 SPRING BAR ARN (3MM)	4393
FCC0100465	96009--SPRING FOR LEVER RH (1.6,2MM) ARN	185
FCC0100524	96913 DIGIT HOLDING CATCH (8/1 0 MM) ARN	5146
FCC0100527	96868 SPRING BAR ASSY 4MM ARN	7630

NUMERATOR SPARES		
Material	Description	List Price ₹
FCC0100567	100823-SPRING BAR ASSY. 4MM ARN	6847
FCC0100628	96869 SPRING BAR ASSY FOR 9-11 WL OF 4MM	6581
FCC0100691	96646 TENS HOLDING CATCH (4/5/6 MM) ARN	1849
FCC0100702	96734 ARN CENTER SHAFT 2MM	1670
FCC0100758	SPLIT PIN	112
FCC0100759	CS205 SPRING	207
FCC0100760	HEX GRUB SCREW	112
FCC0100771	96725 HANDLE	892

RTN WHEELS		
Material	Description	List Price ₹
FCC0100008	90139 RTN NUMBER WHEEL 2MM 0-9	3175
FCC0100010	90616 RTN NUMBER WHEEL 4MM 0-9	4219
FCC0100012	90143 RTN NUMBER WHEEL 3MM 0-9	2999
FCC0100013	90383 RTN ALPHA WHEEL 2MM A-J	3100
FCC0100014	90384 RTN ALPHA WHEEL 2MM K-T	3100
FCC0100015	90387 RTN ALPHA WHEEL 3MM A-J	3035
FCC0100016	90626 RTN NUMBER WHEEL 5MM 0-9	4421
FCC0100017	90933 RTN ALPHA WHEEL 4MM A-J	3710
FCC0100018	90934 RTN ALPHA WHEEL 4MM K-T	3740
FCC0100020	90388 RTN ALPHA WHEEL 3MM K-T	3035
FCC0100021	90389 RTN ALPHA WHEEL 3MM U-Z	3011
FCC0100023	90937 RTN ALPHA WHEEL 5MM A-J	4510
FCC0100024	90385 RTN ALPHA WHEEL 2MM U-Z	3100
FCC0100025	90935 RTN ALPHA WHEEL 4MM U-Z	8500
FCC0100026	90938 RTN ALPHA WHEEL 5MM K-T	4546
FCC0100027	90939 RTN ALPHA WHEEL 5MM U-Z	4510

ROTARY TYPE NUMERATOR		
Material	Description	List Price ₹
FCA0100286	6RTN2 RTN ASSY HAND 2MM 6WHEELS	19439
FCC0100001	6RTN3 RTN ASSY HAND 3MM 6WHEELS	19171
FCC0100002	6RTN4 RTN ASSY HAND 4MM 6WHEEL S	27328
FCC0100004	6RTN2M RTN ASSY M/C 2MM 6WHEELS	20195
FCC0100003	6RTN3M RTN ASSY M/C 3MM 6WHEELS	19633
FCC0100005	6RTN4M RTN ASSY M/C 4MM 6WHEELS	31136
FCC0100339	6RTN5 RTN ASSY HAND SPL. 95003	43968
FCC0100006	5RTN5M RTN ASSY M/C 5MM 5WHEELS	25067
FCC0100007	5RTN5 RTN ASSY HAND 5MM 5WHEEL S	31991
FCC0100303	9RTN3 RTN ASSY SPL . HAND 9WHEELS 3MM	48437
FCC0100314	RTN ASSY SPL. HAND 6RTN5	43968
FCC0100321	8RTN3 RTN ASSY SPL . HAND 8WHEELS 3MM	34048
FCC0100333	8RTN2M RTN ASSY SPL . M/C . 8WHEELS 2MM	29973



## CMS: Lable Marker

LABLE MARKER		
Material	Description	List Price ₹
FCE0100003	LM40/1.6 METAL LABEL MARKER 1.6MM	62102
FCE0100002	LM40/2 METAL LABEL MARKER 2MM	60920
FCE0100001	LM40/3 METAL LABEL MARKER 3MM	60031
FCA0103963	LM40/4 SPL. METAL LABEL MARKER 4MM	92568

LABLE MARKER SPARES		
Material	Description	List Price ₹
FCE0100034	2592 CIRCLIP 4 MM DIA	70
FCE0100077	95092 - MAIN SPINDLE - LM40	7505
FCE0100057	95094 PIVOT PIN	235
FCE0100079	95097 HANDLE ARM LM40	594
FCE0100016	95116 CLAMPING NUT	269
FCE0100060	95117 TABLE STOP	592
FCE0100073	95117-TABLE STOP (L.M.40 M/C)	592
FCE0100061	95119 CLAMPING SCREW	235
FCE0100074	95119-CLAMPING SCREW (L.M.40 M/C)	235
FCE0100085	95120 PAWL ACTUATING ROD LM/40	384
FCE0100007	95123 ADJUSTING THUMB SCREW	549
FCE0100053	95124 DOVETAIL SLIDE	2795
FCE0100026	95128 LINK	281
FCE0100064	95129 GUIDE BAR	1299

LABLE MARKER SPARES		
Material	Description	List Price ₹
FCE0100024	95130 SPRING PLATE	585
FCE0100028	95132 PIVOT PIN	178
FCE0100063	95133 GUIDE STRIP SMALL 95133	223
FCE0100062	95134 GUIDE STRIP LARGE	178
FCE0100006	95135 DEPTH ADJUSTER	1121
FCE0100020	95136 SPRING RETURN STOP	256
FCE0100045	95137 PINION	1770
FCE0100027	95138 INDEXING TOOTH	999
FCE0100051	95139 RACK	2870
FCE0100072	95139-RACK - (L.M.40 M/C)	2955
FCE0100031	95141 SHOULDER SCREW	691
FCE0100052	95146 TABLE	3055
FCE0100076	95146-TABLE FOR LM40 M/C	3055
FCE0100075	95147-SPINDLE FOR RATCHET (L.M.40 M/C)	133
FCE0100004	95148 SPRING FOR RETURN DRIVE	353
FCE0100049	95152 TABLE GUIDE	6875
FCE0100036	95157 SPRING TORSION L.H.	288
FCE0100037	95158 SPRING TORSION R.H.	288
FCE0100048	95159 MAIN FRAME CASTING	18300
FCE0100056	95161 WEDGE PLATE R.H	1268

LABLE MARKER SPARES		
Material	Description	List Price ₹
FCE0100089	95167 BANK OF POINTER FOR LM40	220
FCE0100069	95177 RATCHET & PINION ASSY.-PITCH 2MM	1579
FCE0100078	95178 RATCHET & PINION ASSY-PITCH 1.6MM	1579
FCE0100017	95179 RATCHET AND PINION ASSY. 3MM PITCH	2352
FCE0100088	95193 POINTER FOR LM40	220
FCE0100039	95194 OUTER HOUSING	314
FCE0100086	95194 OUTER HOUSING	313
FCE0100044	95195 STEEL BALL 4 MM	218
FCE0100043	95196 SPRING	231
FCE0100038	95231 COVER	331
FCE0100030	95232 O RING	319
FCE0100011	95240 POINTER 1.6 MM	445
FCE0100032	95265 LABLE CLIP ASSY.	7797
FCE0100047	95270 COLLAR	395
FCE0100082	95273 CLIP TOP	459
FCE0100059	95274 CLIP PIN	560
FCE0100070	95275 WING NUT ASSY.	476
FCE0100019	95278 DIAL WHEEL ASSY. 2 MM	24473
FCC0100147	95280 DIAL WHEEL 3MM	14652
FCE0100058	95287 SPRING COMPRESSION	241

LABLE MARKER SPARES		
Material	Description	List Price ₹
FCE0100015	95295 SPECIAL SCREW	177
FCE0100025	CS162 SPRING	229
FCE0100005	CS196 COMPRESSION SPRING	64
FCE0100084	PAWL HOLDER ASSEMBLY LM/40	2779
FCE0100066	POINTER (3 MM)	220
FCE0100067	SCREW (KEY)98007	462
FCE0100087	SPRING (95196) FOR LM40	229
FCE0100083	STEEL BALL 4 MM DIA (95195)	216





## CMS: Roll Marking Machines

ROLL MARKING MACHINES		
Material	Description	List Price ₹
FCF0100001	RH10 - ROLL MARKING MACHINE	58528
FCF0100002	RH15 ROLL MARKING MACHINE	58180
FCM0100002	RP15-PNEUMATIC ROLL MARKING M/C	69913
FCM0100004	RHP-15 DUAL OPERATION ROLL MARKING M/C	115061
FCM0100005	RP30-PNEUMATIC ROLL MARKING M/C	61344

ROLL MARKING MACHINE SPARES		
Material	Description	List Price ₹
FCF0100011	6324 WASHER	208
FCF0100038	6326 STOPPER PIN ASSEMBLY	409
FCF0100018	6380 STUD ARBOUR ASSY	17382
FCF0100020	MAIN BODY FOR RH10	28530
FCF0100021	RC1 CRADLE ASSY . (90114)	12345
FCF0100017	RC2 CRADLE ASSY . (90115)	13151
FCF0100030	RC3 CRADLE ASSY . (6806)	18671
FCF0100029	SIDE FRAME R.H FOR RH-10 6301	4626

ROLL MARKING MACHINE SPARES		
Material	Description	List Price ₹
FCF0100043	6303 MAIN BODY RH10	8388
FCF0100044	6304 SPINDLE RH10	3289
FCF0100022	6305 DOVETAIL SLIDE FOR ROLL MARKING	4354
FCF0100023	6306 SCREW FOR DOVETAIL SLIDE	3753
FCF0100015	6310 LINK	883
FCF0100046	6311 SHOULDER SCREW	283
FCF0100009	6312 SHOULDER SCREW	461
FCF0100010	6313 SHOULDER SCREW	283
FCF0100003	6314 KNOB	837
FCF0100047	6315 LOCK SCREW	168
FCF0100035	6316 LOCK NUT	426
FCF0100036	6317 SCREW HANDLE	451
FCF0100037	6318 SHOULDER SCREW	306
FCF0100048	6319 STOPPER PIN	124
FCF0100045	6321 BUSH	606
FCF0100049	6323 WEDGE PLATE	271



IMPACT PRESS		
Material	Description	List Price ₹
FCG0100001	IP28H IMPACT PRESS ASSY. HAND	69267
FCG0100005	IMPACT PRESS ASSY PNEUMATIC IP28PN	77448
FCG0100014	PORTABEL PNEUMAT IMPACT PRESS IPP7 W/HOL	53833

IMPACT PRESS SPARES		
Material	Description	List Price ₹
FCG0100011	95264/A ADAPTOR FOR IP28 10D X 59L	772
FCG0100016	98008 PINION SHAFT	3123
FCG0100045	98010 TORSION SPRING	133
FCG0100017	98011 SPRING HOUSING	1638
FCG0100041	98013 LOCKING SCREW	540
FCG0100019	98015 SUPPORT RING	1736
FCG0100048	98017 SINTERED BUSH FOR IP28	1038
FCG0100050	98019 COLLAR FOR IMPACT PRESS	263
FCG0100042	98024 KNOB	750
FCG0100043	98025 PRESSURE SPRING	160
FCG0100035	98026 TRIGGER HOUSING	3736
FCG0100021	98027 TRIGGER SPRING	512
FCG0100027	98028 TRIGGER BUSH	1710
FCG0100028	98029 GUIDE TUBE	1710
FCG0100034	98030 STEEL BALL DIA.6mm	185
FCG0100004	98032 IMPACT SPRING HOUSING	3759
FCG0100020	98033 HAMMER	4182
FCG0100052	98034A IMPACT SPRING	115
FCG0100053	98034B IMPACT SPRING	114
FCG0100054	98034C IMPACT SPRING	114
FCG0100002	98034D IMPACT SPRING	589
FCG0100003	98035 IMPACT ADJUST. NUT	2069
FCG0100022	98036 COLLET HOLDER	1604
FCG0100029	98037 CUSHION NUT	991
FCG0100023	98038 COLLET	974
FCG0100024	98039 NUT FOR COLLET	666
FCG0100025	98040 LOCK NUT	353

IMPACT PRESS SPARES		
Material	Description	List Price ₹
FCG0100026	98041 LOCK NUT	353
FCG0100030	98042 RUBBER RING	161
FCG0100031	98043 DAMPING NUT	494
FCG0100032	98044 KEY	475
FCG0100036	98045 HEX NUT	968
FCG0100049	98047 HANDLE FOR IMPACT PRESS	484
FCG0100040	98048 PNEUMATIC CYLINDER ASSY	8829
FCG0100038	98049 FOOT VALVE 2.8T 98049	3736
FCG0100046	98051 NOZZLE	255
FCG0100018	98059 ADAPTOR FOR IMPACT	2362
FCG0100044	98067 STEEL BALL DIA. 3.5 MM	61
FCG0100033	98068 HOLLOW PIN	105
FCG0100057	98078 UPPER FLANGE IP28PN	1201
FCG0100058	98079 LOWER FLANGE IP28PN	1309
FCG0100015	98081 CYLINDER SHELL	2238
FCG0100009	98083 O-RING 20.22x3.53	105
FCG0100008	98084 O-RING 85.1x5.33	172
FCG0100051	FOOT VALVE ASSY IP28	5338
FCG0100060	IMPACT PRESS SPARES	6620



**Industry Automation**

**ENGINE MARKING SPM**



**COWL MARKING SPM**



**LASER MARKING SPM FOR  
ENGINE CRANKCASE COVER  
FOR TWO-WHEELERS**



**ID PLATE MARKING SPM**



**FRAME MARKING SPM**



**LASER MARKING SPM FOR DAMPER  
COMPONENT FOR GENSETS**



**CAMSHAFT AND  
CRANKSHAFT MARKING**



**BILLET MARKING**





**Bradma**<sup>®</sup>  
**Automating The Future**

---

**HEAD OFFICE**

**FORBES & COMPANY LIMITED**

Forbes Building, Charanjit Rai Marg, Fort, Mumbai 400 001

**Telephone:** +91 (0) 22 61358958 | **Email:** sales@forbes.co.in

---

**FACTORY ADDRESS**

**CHHATRAPATI SAMBAJINAGAR**

B 13, Waluj MIDC, Chhatrapati Sambhajanagar - 431133

**Telephone:** +91 (0) 240 2553422

GST NUMBER: 27AAACF1765A1Z3 | CIN: L17110MH1919PLC000628

[www.bradma-forbes.com](http://www.bradma-forbes.com)